

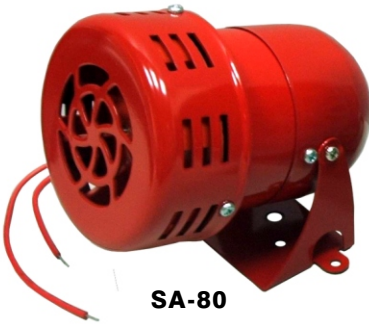
Type	Size	Part Number	Rated Current RMS-Amps	
FWC	10x38mm	FWC-6A10F	6A	600V
		FWC-8A10F	8A	
		FWC-10A10F	10A	
		FWC-12A10F	12A	
		FWC-16A10F	16A	
		FWC-20A10F	20A	
		FWC-25A10F	25A	
ET	14x51mm	25ET	25A	600V
		32ET	32A	
		35ET	35A	
		40ET	40A	
		45ET	45A	
		56ET	56A	
		63ET	63A	
		80ET	80A	
FE	14x51mm	35FE	35A	600V
		40FE	40A	
		45FE	45A	
		50FE	50A	
		63FE	63A	
		71FE	71A	
		80FE	80A	
		90FE	90A	
		100FE	100A	

Relay Socket

Fuse Holder
SF-111AE



SIREN



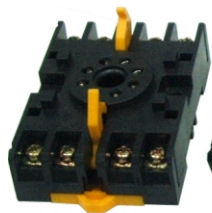
SA-80



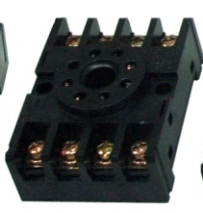
SA-140



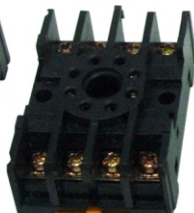
P2CF-11



P2CF-08



PF083A



PF085A



PF113A



PR-083A



8PFA



SYF-14A

Relay

703XB / 703XC



ORDERING INFORMATION

703 X B L - DC 24 V

(SERIES NO.)

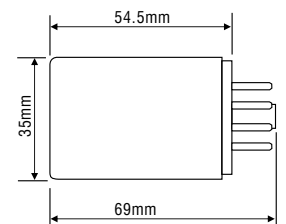
Contact Form	
XA	SPDT 8pin
XB	DPDT 8pin
XC	TPDT 11pin

Optional	
	Standard
L	With Lamp
M	With manual button
X	Open Type

Coil Rated Voltage

DC	6 / 12 / 24 / 48 / 110 / 125V
AC	6 / 12 / 24 / 48 / 110 / 120 / 220 / 240

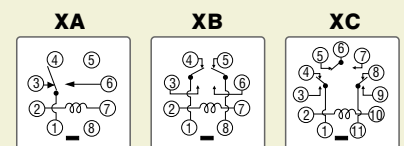
703XAX (SPDT 3pins)
703XBX (DPDT 6pins)
703XCX (TPDT 9pins)



SPECIFICATION

Contact Rating :	10A/28VDC, 10A/120VAC, 5A/240VAC
Contact Resistance:	50mΩ Max. (Initial value)
Operating Time:	20ms max.
Release Time :	20ms max.
Insulation Resistance:	1000MΩ Min. (DC500V)

WIRING DIAGRAM



- Industry standard octal-type termination for quick installation.
- Contact arrangements from 1 form A to 3 form C.
- Indicator lamp and push-to-test button option available.
- Anti-sticking contact midjet.
- Option available for Relay Socket.